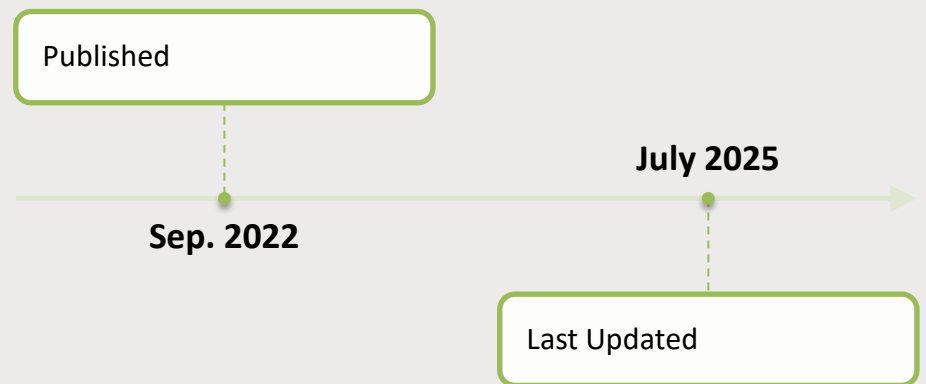




WESTERN
BUILDING
SYSTEMS
CARBON
REDUCTION PLAN





COMMITMENT TO ACHIEVING NET ZERO

Western Building
Systems Ltd is
committed to
achieving Net Zero
emissions by
2040.

western

BASELINE EMISSIONS FOOTPRINT

- Baseline Year: 2021/22
- The baseline defined relates to Western Building Systems. The emissions are a record of the greenhouse gases that have been produced in the past and were produced prior to the introduction of any strategies to reduce emissions.
- EMISSIONS TOTAL (tCO₂e):
 - Scope 1: 347
 - Scope 2: 86
 - Scope 3: 308
 - Total Emissions: 741
- Scope 3 includes:
 - Upstream & Downstream Transportation
 - Waste Generation
 - Business Travel
 - Commuting
 - Water Use

The Western logo features the word "western" in a bold, dark blue, sans-serif font. A thick, horizontal yellow bar is positioned above the letter "w". The logo is set against a background of concentric, overlapping circles in shades of light blue and beige.



CURRENT EMISSIONS REPORTING



EMISSIONS REDUCTION TARGETS

- We project that carbon emissions will decrease over the next five years to below 556 tCO₂e by 2029, representing a further 25% reduction.

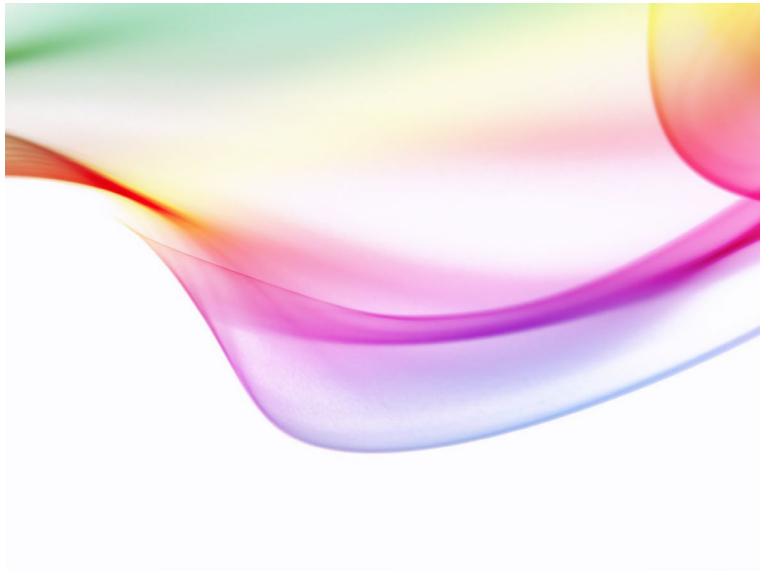
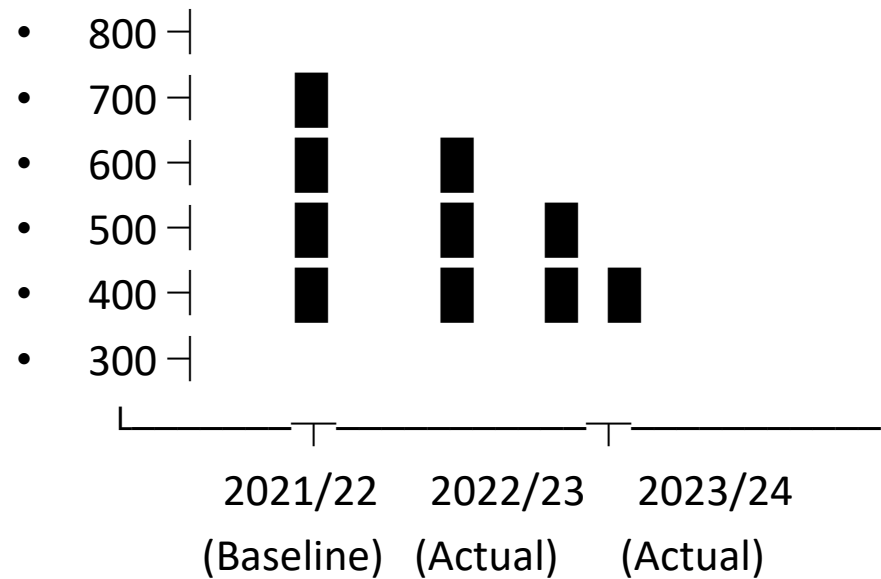
The Western logo is centered within a white circle that has a thin yellow border. The circle is positioned on the right side of the slide, overlapping a solid blue vertical bar that runs from the top to the bottom of the frame. The logo itself consists of the word "western" in a dark blue, lowercase, sans-serif font. A short, horizontal yellow bar is placed above the letter "w".

western



TARGET VS ACTUAL

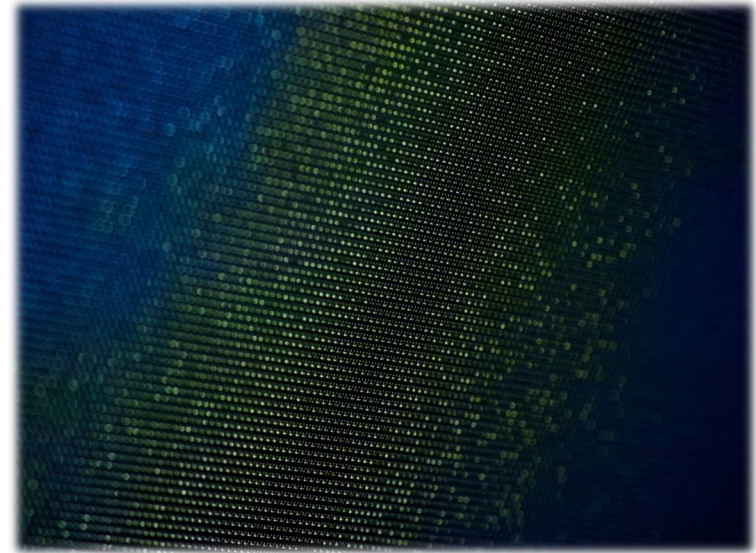
- Carbon Emissions (tCO₂e)



CARBON REDUCTION PROJECTS



WBS continues to implement and develop the following measures:	<ul style="list-style-type: none">• Annual review of the Environmental Sustainability Strategy	<ul style="list-style-type: none">• Staff and supply chain engagement workshops
<ul style="list-style-type: none">• Upgrading plant and machinery to low-emission alternatives	<ul style="list-style-type: none">• Optimising material usage to minimise waste	<ul style="list-style-type: none">• Transition to Electric Forklifts & Company Vehicles
<ul style="list-style-type: none">• Installation of LED lighting throughout facilities	<ul style="list-style-type: none">• Paperless administration systems	<ul style="list-style-type: none">• Increased use of remote conferencing
<ul style="list-style-type: none">• PV Panel Installation	<ul style="list-style-type: none">• EV Charging Points	<ul style="list-style-type: none">• Procurement of Green Electricity
<ul style="list-style-type: none">• Strengthened ISO14001	<ul style="list-style-type: none">• Local supplier prioritisation	<ul style="list-style-type: none">• Waste reduction collaboration



METHODOLOGY & STANDARDS

- EMISSIONS CALCULATED USING GHG PROTOCOL AND DEFRA EMISSIONS FACTORS

- SCOPE 1 & 2 REPORTED UNDER SECR COMPLIANCE

- SCOPE 3 REPORTED UNDER THE GHG CORPORATE VALUE CHAIN STANDARD

- REPORTING ALIGNED WITH PPN 06/21 REQUIREMENTS

- REVIEWED AND VERIFIED BY INTERNAL HSE TEAM AND LEADERSHIP



BREAKDOWN BY ACTIVITY OR BUSINESS AREA



SCOPE 3 EMISSIONS IN
2023/24 (270.2 TCO₂E)
BROKEN DOWN BY:



• TRANSPORT
(UPSTREAM &
DOWNSTREAM): 120.05
TCO₂E



• WASTE: 41.03 TCO₂E



• BUSINESS TRAVEL &
COMMUTING: 81.7
TCO₂E

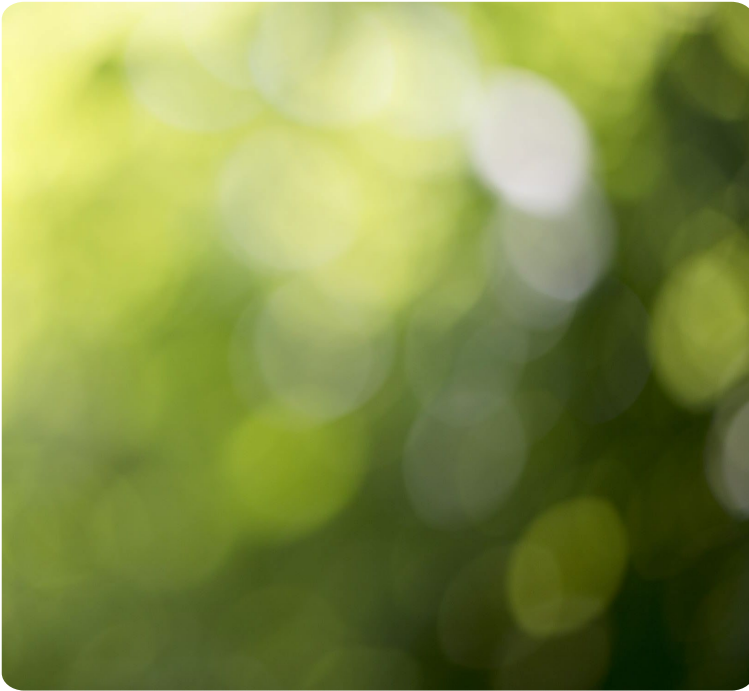


• WATER: 27.42 TCO₂E



IDENTIFYING THESE
SOURCES HELPS TARGET
FUTURE REDUCTIONS
EFFECTIVELY.

NET ZERO ROADMAP



- 2025: Continue reducing emissions through plant upgrades & renewable energy

- 2027: Electrification of full internal vehicle fleet

- 2029: Target to reduce emissions to <556 tCO₂e

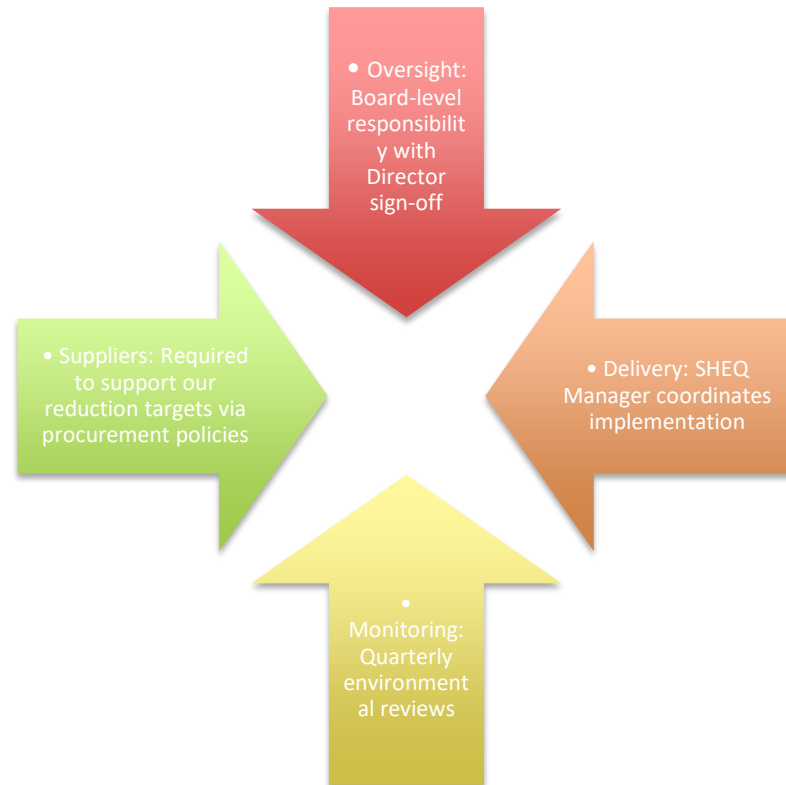
- 2035: 50% reduction from baseline

- 2040: Achieve Net Zero

Offsets only considered for residual emissions after all feasible reductions.



GOVERNANCE & RESPONSIBILITY



SOCIAL VALUE & CLIENT ALIGNMENT

- Supports CCS, NHS SBS, and public sector PPN 06/21 requirements

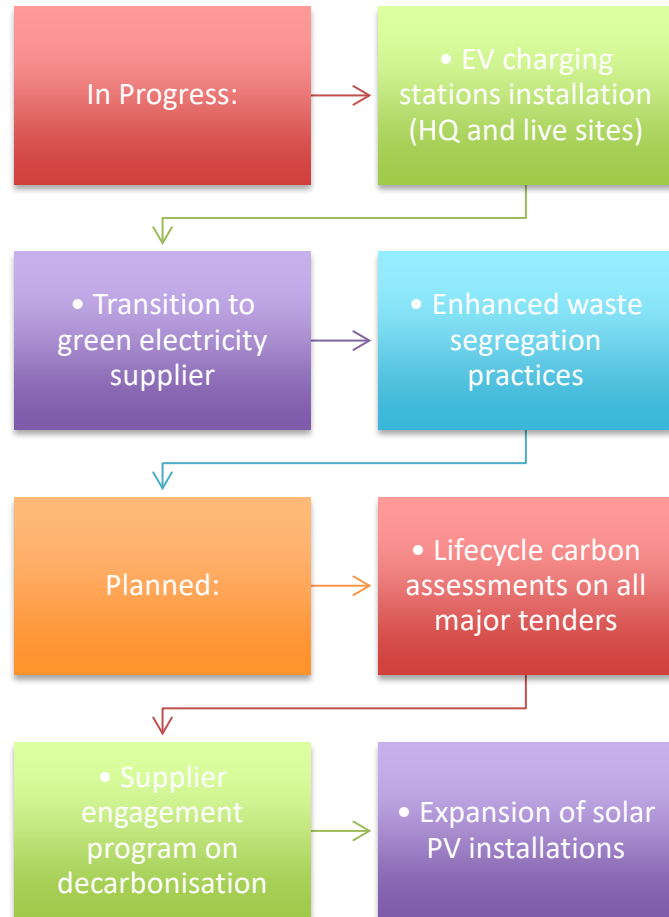
- WBS carbon strategy supports local employment, cleaner air, innovation

- Modular construction = inherently lower embodied carbon

- Contributes to long-term operational savings for clients



PLANNED & IN-PROGRESS PROJECTS



DECLARATION AND SIGN OFF

THIS CARBON REDUCTION PLAN HAS BEEN
COMPLETED IN ACCORDANCE WITH PPN 06/21.

EMISSIONS REPORTED IN LINE WITH THE GHG
REPORTING PROTOCOL USING GOVERNMENT
EMISSIONS FACTORS.

SCOPE 1 AND 2 REPORTED PER SECR; SCOPE 3 PER
CORPORATE VALUE CHAIN STANDARD.

APPROVED BY THE BOARD.

SIGNED:



D MCCLOSKEY | DIRECTOR | DATE: 22 JULY 2025



 **western**

O